


Corporate Profile



Jalan Raya Cicadas No. 258
Gunung Putri, Bogor 16964
Jawa Barat - Indonesia
T : +62 21 8686 3335/3300
F : +62 21 8686 3339

www.j-skye.com

 [skyenergyindonesia](https://www.facebook.com/skyenergyindonesia)

 [@sky_energy_indo](https://twitter.com/sky_energy_indo)



**Innovative
Clean Technology
Marketplace**

INNOVATION
TEAMWORK
CREATIVE



About Us

Sky Energy Indonesia (SKY ENERGY) is a professional manufacturer of solar modules with 7 years of experience in production and quality control since 2008. Sky Energy is also a provider of technical services for the solar power plant (on-grid and off-grid), including technical design, installation and maintenance, to customers worldwide.

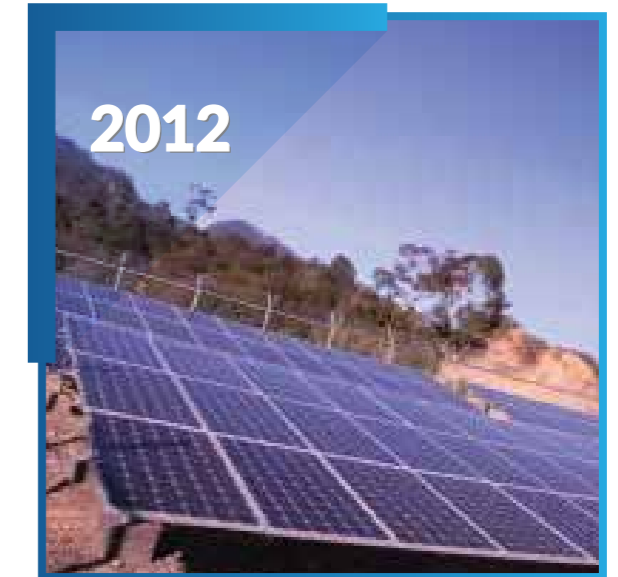
Sky Energy Testing Lab has developed with experts and engineers working together with hitachi high technologies Japan. Sky Energy's technical services are composed of technical design, installation and maintenance of the power plant. The projects are accomplished and supported by the technical team of Sky Energy Indonesia.

The Earth we are living on has been polluted in the recent decades, and natural resources such as oil, gas and coal will be out of use in the future. Sky Energy has been working hard for the development of solar technology, solar modules with higher efficiency and integration of solar power plants. We believe in "Innovation creates future" and we believe Sky Energy will be one of the pioneers of solar technology and loyal protector of our green planet.

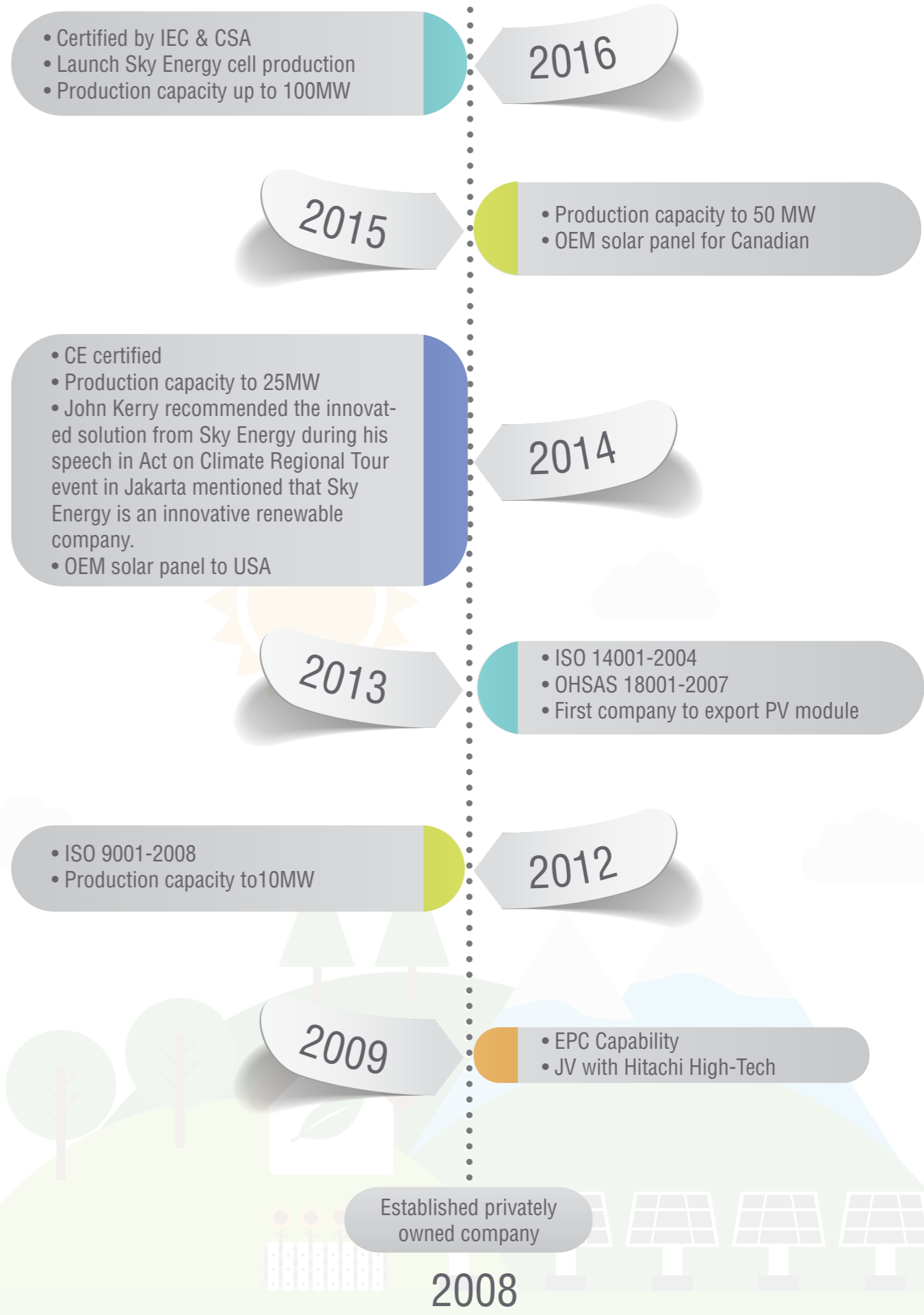
Product

- PV Cell and Module
- Power Solution

Experiences



Experiences



Company History

INNOVATION
TEAMWORK
CREATIVE



Vision & Mission

Sky Energy is dedicated to find innovative solutions to the world's pollution issues & make earth cleaner by researching & improving green technology, so the future will be better for coming generations.



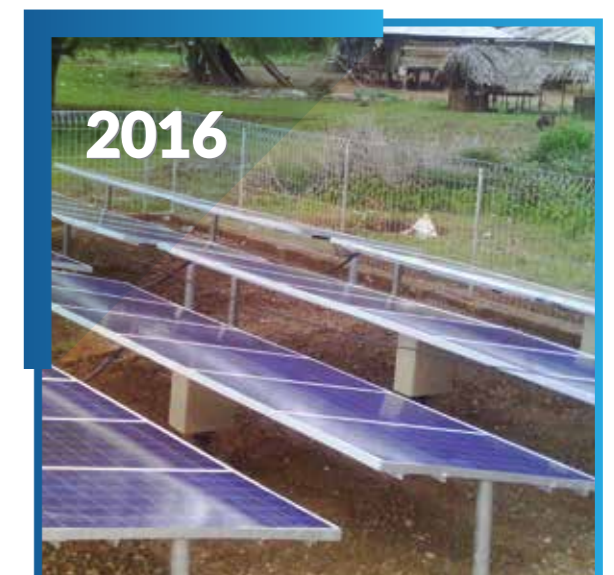
SAVE ENERGY

Certified

Our PV modules have been certified by the TUV, CE, CSA; SKY ENERGY is certified by ISO9001, ISO14001, OHSAS18001 etc. As a leading PV manufacturer in Indonesia, our prioritized goal is to keep developing and producing high quality and high efficiency modules.



Experiences





Our Solution



- Sky Energy is a private company engaged in the field of manufacturing alternative energy solution like solar energy. Our company not only operates as a manufacturing company, but also a company that does the EPC (Engineering, Procurement & Construction).

- Sky Energy supplying and installing solar solar photovoltaic (PV) and help more and more people discover the benefits of solar thermal systems to produce clean energy and environmentally friendly (Green Energy) to the needs of homes, offices and industry in Indonesia.



- Our experience in working with all sectors, including commercial, agricultural, industrial and community, with the support of contractors, architects and planning in projects large and small, so it can recommend the best system of solar panels for every customer. with an emphasis on product quality and designs to meet the precise needs, we have built a reputation that is unmatched in the industry.

- Sky Energy always committed to finding innovative solutions to the world's energy problems and make this company always in the forefront in innovating, and make the world better by realizing a green environment for future generations better.

Sky Energy engaging the quality of collaboration are partnership in terms of technology & distributorship with several major companies.

INNOVATION
TEAMWORK
CREATIVE

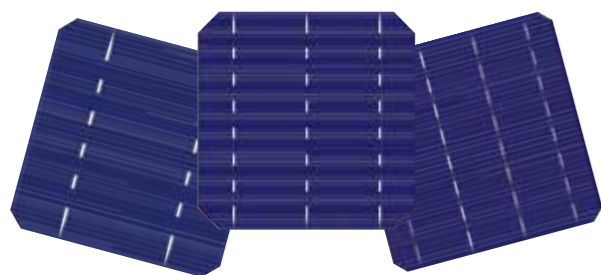


Foldable Solar Panel

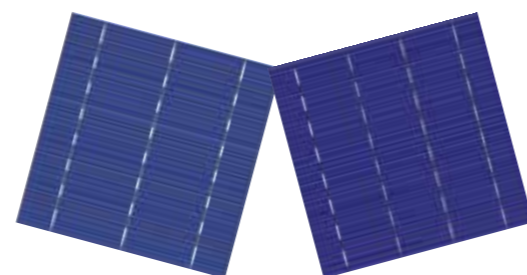


- Uniform color and appearance
- High peel strength
- High efficiency solar cells with isotropic etched surface
- Low reverse current, high shunting resistance and dependability
- Better performance in low light condition for improved energy yield
- Full checking for reverse current and visual appearance, tightly classified to optimize output of modules

Variants



Mono Crystalline Solar Cells (Mono 5"-Ø165)
Mono Crystalline Solar Cells (Mono 6"-Ø200)
Mono Crystalline Solar Cells (Mono 6"-Ø210)



Poly Crystalline Solar Cells (Poly 6"-Ø220)

Electrical Performance (STC: AM 1.5, 1000W/m², 25°C)

Module Type	ST36M2/120-FDP	ST36M2/80-FDP	ST36M2/40-FDP
Maximum Power (P _{max} / W)	120 (60*2)	80 (40*2)	40 (20*2)
Power Tolerance		± 3%	
Maximum Power Voltage (V _m / V)	17.9	17.7	17.5
Maximum Power Current (I _m / A)	6.71	4.52	2.29
Open Circuit Voltage (V _{oc} / V)	21.5	21.3	21.1
Short Circuit Current (I _{sc} / A)	7.25	4.88	2.47
Module Efficiency (%)	14.48	14.51	12.33

Electrical Performance (STC: AM 1.5, 1000W/m², 25°C)

Module Type	ST36M3/150-FDP	ST36M3/120-FDP	ST36M3/90-FDP
Maximum Power (P _{max} / W)	150 (50*3)	120 (40*3)	90 (30*3)
Power Tolerance		± 3%	
Maximum Power Voltage (V _m / V)	17.8	17.6	17.4
Maximum Power Current (I _m / A)	8.43	6.82	5.18
Open Circuit Voltage (V _{oc} / V)	21.4	21.2	21.0
Short Circuit Current (I _{sc} / A)	9.19	7.44	5.65
Module Efficiency (%)	15.97	14.40	13.48

Flexibel Solar Panel



Electrical Performance (STC : AM 1.5, 1000W/m², 25°C)

Module Type	ST36M 18-FLP	ST32M30-FLP	ST36M 50-FLP	ST64M 60-FLP	ST28M 85-FLP	ST32M 100-FLP	ST36M 110-FLP	ST40M 120-FLP	ST44M 135-FLP
Maximum Power (Pmax / W)	18	30	50	60	85	100	110	120	135
Power Tolerance	± 5 %								
Maximum Power Voltage (Vm / V)	18.6	16.1	17.2	32.1	14.8	17.6	19.4	21.2	23.4
Maximum Power Current (Im / A)	0.97	1.87	2.92	1.87	5.75	5.69	5.69	5.68	5.78
Open Circuit Voltage (Voc / V)	22.2	18.9	20.5	38.5	17.6	21.1	23.2	25.3	28.0
Short Circuit Current (Isc / A)	1.06	2.05	3.21	2.05	6.31	6.24	6.25	6.24	6.35
Module Efficiency(%)	14.64	14.38	16.69	15.16	16.84	17.39	17.12	16.84	17.42

Temperature Properties

Maximum System Voltage (VDC)	600								
Maximum Series Fuse Rating (A)	2	3	5	3	10	10	10	10	10
Normal Operating Cell Temperature	45±2°C								
Temperature Coefficient of Pm	-0.38 %/°C								
Temperature Coefficient of Voc	-60.8mV/°C								

Mechanical Properties

Dimensions (LxWxH / mm)	444x277x3/20	535x390x3/20	560x535x3/20	740x535x3/20	935x540x3/20	1065x540x3/20	1190x540x3/20	1320x540x3/20	1435x540x3/20
Maximum Bend Degree (°)	30 degree								
Weight (Kg)	0.4	0.6	0.8	1.0	1.2	1.4	1.5	1.8	2.0
Cells Efficiency	20.5%	19.6%	21.5%	19.6%	20.5%	20.0%	20.0%	20.0%	20.8%
Sizes of Cells	125*(1/6)	125*(1/3)	125*(1/2)	125*(1/3)	125*125	125*125	125*125	125*125	125*125
No. of Cells(pcs)	36 (2x18)	32 (4x8)	32 (4x8)	64 (4x16)	28 (4x7)	32 (4x8)	36(4x9)	40(4x10)	44(4x11)
Sizes of Junction box cable (mm ²)	2.5	2.5	2.5	2.5	4	4	4	4	4
Container 20GP(pcs)	10944	6432	4288	3752	2600	2600	2080	2080	1820
Container 40HC(pcs)	26208	16416	10944	8512	6776	6160	5544	4928	4620

Monocrystalline

Solar Modules

Features & Performance

Our PV modules have been certified by the TUV, CE, CSA; **SKY ENERGY** is certified by ISO9001, ISO14001, OHSAS18001 etc. As a leading PV manufacturer in Indonesia, our prioritized goal is to keep developing and producing high quality and high efficiency modules.



Mechanical Property

- ☞ Snow loads up to 5400Pa
- ☞ Wind loads up to 2400Pa

Low Light Performance

- ☞ Excellent performance under low light (morning, evening and cloudy days)

High Durability

- ☞ Durable PV modules, independently tested for harsh environmental conditions, such as exposure to salt mist, ammonia and known PID risk factors.



Polycrystalline

Solar Modules

Features & Performance

Our PV modules have been certified by the TUV, CE, CSA; **SKY ENERGY** is certified by ISO9001, ISO14001, OHSAS18001 etc. As a leading PV manufacturer in Indonesia, our prioritized goal is to keep developing and producing high quality and high efficiency modules.



Mechanical Property

- ☑ Snow loads up to 5400Pa
- ☑ Wind loads up to 2400Pa

Low Light Performance

- ☑ Excellent performance under low light (morning, evening and cloudy days)

High Durability

- ☑ Durable PV modules, independently tested for harsh environmental conditions, such as exposure to salt mist, ammonia and known PID risk factors.

Electrical Performance (STC:AM 1.5, 1000W/m², 25°C)

Module Type	ST36M5	ST36M10	ST36M20	ST36M30	ST36M40	ST36M50	ST36M60	ST36M70	ST36M80	ST36M90	ST36M100	ST36M110	ST36M120	ST36M130
Maximum Power (Pmax / W)	5	10	20	30	40	50	60	70	80	90	100	110	120	130
Power Tolerance	± 3%													
Maximum Power Voltage (Vm / V)	8.4	16.8	17.0	17.2	17.3	17.4	17.5	17.5	17.6	17.6	17.7	17.7	17.8	17.9
Maximum Power Current (Im / A)	0.60	0.60	1.18	1.74	2.31	2.87	3.43	4.00	4.55	5.11	5.65	6.21	6.74	7.26
Open Circuit Voltage (Voc / V)	10.1	20.2	20.4	20.6	20.8	20.9	21.0	21.0	21.1	21.1	21.2	21.2	21.4	21.5
Short Circuit Current (Isc / A)	0.68	0.68	1.34	1.96	2.60	3.24	3.86	4.44	5.05	5.68	6.28	6.81	7.39	7.96
Module Efficiency (%)	10.4	11.15	12.08	13.59	13.57	13.82	13.99	14.51	14.58	14.76	14.78	14.93	15.05	15.16

Module Type	ST36M90	ST36M95	ST36M100	ST36M105	ST36M140	ST36M145	ST36M150	ST36M155	ST36M160	ST36M165	ST48M185	ST48M190	ST48M195	ST48M200
Maximum Power (Pmax / W)	90	95	100	105	140	145	150	155	160	165	185	190	195	200
Power Tolerance	± 3%													
Maximum Power Voltage (Vm / V)	17.6	18.2	18.7	19.0	18.0	18.3	18.4	18.6	18.7	18.9	23.8	24.1	24.3	24.5
Maximum Power Current (Im / A)	5.11	5.22	5.36	5.54	7.79	7.96	8.19	8.35	8.56	8.72	7.78	7.91	8.06	8.19
Open Circuit Voltage (Voc / V)	22.0	22.3	22.5	22.6	22.1	22.2	22.4	22.6	22.7	22.9	29.2	29.6	29.7	29.9
Short Circuit Current (Isc / A)	5.45	5.63	5.78	5.97	8.64	8.74	8.82	8.87	9.11	9.23	8.68	8.70	8.77	8.82
Module Efficiency (%)	13.81	14.57	15.34	16.11	14.12	14.62	15.13	15.63	16.14	16.64	14.16	14.54	14.92	15.30

Module Type	ST48M205	ST48M210	ST48M215	ST48M220	ST54M210	ST54M215	ST54M220	ST54M225	ST54M230	ST54M235	ST54M240	ST54M245	ST60M265
Maximum Power (Pmax / W)	205	210	215	220	210	215	220	225	230	235	240	245	265
Power Tolerance	± 3%												
Maximum Power Voltage (Vm / V)	24.8	25.0	25.3	25.8	27.0	27.2	27.4	27.5	27.8	28.1	28.4	28.7	31.5
Maximum Power Current (Im / A)	8.28	8.43	8.51	8.55	7.79	7.91	8.06	8.19	8.28	8.39	8.47	8.55	8.43
Open Circuit Voltage (Voc / V)	30.0	30.2	30.3	30.6	33.1	33.2	33.4	33.6	33.8	33.9	34.0	34.1	37.8
Short Circuit Current (Isc / A)	8.86	8.97	9.07	9.21	8.64	8.70	8.77	8.82	8.86	8.93	9.02	9.21	9.06
Module Efficiency (%)	15.69	16.07	16.45	16.84	14.33	14.67	15.02	15.36	15.70	16.04	16.38	16.72	16.32

Module Type	ST60M275	ST60M280	ST72M180	ST72M185	ST72M190	ST72M195	ST72M200	ST72M205	ST72M210
Maximum Power (Pmax / W)	275	280	180	185	190	195	200	205	210
Power Tolerance	± 3%								
Maximum Power Voltage (Vm / V)	31.8	31.9	35.3	36.1	36.5	36.7	37.4	37.7	38.0
Maximum Power Current (Im / A)	8.67	8.79	5.11	5.13	5.22	5.33	5.36	5.45	5.54
Open Circuit Voltage (Voc / V)	38.3	38.7	44.0	44.5	44.6	44.8	45.0	45.1	45.3
Short Circuit Current (Isc / A)	9.16	9.24	5.45	5.52	5.65	5.72	5.78	5.87	5.97
Module Efficiency (%)	16.94	17.25	14.10	14.49	14.88	15.27	15.67	16.06	16.45

Module Type	ST72M285	ST72M290	ST72M295	ST72M300	ST72M305	ST72M310	ST72M315	ST72M320	ST72M325	ST72M330
Maximum Power (Pmax / W)	285	290	295	300	305	310	315	320	325	330
Power Tolerance	± 3%									
Maximum Power Voltage (Vm / V)	35.3	35.5	35.6	35.9	36.1	36.4	36.8	37.0	37.4	37.8
Maximum Power Current (Im / A)	8.07	8.16	8.30	8.36	8.45	8.51	8.55	8.64	8.68	8.72
Open Circuit Voltage (Voc / V)	44.3	44.4	44.6	44.8	45.0	45.2	45.3	45.4	45.5	45.7
Short Circuit Current (Isc / A)	8.70	8.83	8.89	8.91	8.95	8.96	9.02	9.11	9.16	9.21
Module Efficiency (%)	14.76	15.02	15.28	15.54	15.80	16.06	16.32	16.58	16.84	17.09

Electrical Performance (STC:AM 1.5, 1000W/m², 25°C)

Module Type	ST36P5	ST36P10	ST36P20	ST36P30	ST36P40	ST36P50	ST36P60	ST36P70	ST36P80	ST36P90	ST36P100	ST36P110	ST36P120	ST36P130	ST36P135	ST36P140
Maximum Power (Pmax / W)	5	10	20	30	40	50	60	70	80	90	100	110	120	130	135	140
Power Tolerance	± 3%															
Maximum Power Voltage (Vm / V)	8.5	17.0	17.1	17.4	17.4	17.5	17.5	17.6	17.7	17.8	17.9	17.9	18.0	18.1	17.5	17.6
Maximum Power Current (Im / A)	0.59	0.59	1.17	1.73	2.30	2.86	3.43	3.97	4.51	5.05	5.59	6.16	6.65	7.19	7.71	7.95
Open Circuit Voltage (Voc / V)	10.2	20.4	20.5	21.0	21.0	21.1	21.2	21.3	21.5	21.6	21.7	21.7	21.8	21.9	21.5	21.7
Short Circuit Current (Isc / A)	0.68	0.67	1.34	1.95	2.58	3.20	3.85	4.44	5.05	5.66	6.16	6.77	7.33	7.92	8.56	8.69
Module Efficiency (%)	10.4	11.15	12.08	13.59	13.57	13.82	13.99	14.51	14.74	14.76	14.78	14.93	15.05	15.16	13.61	14.12

Module Type	ST36P145	ST36P150	ST36P155	ST48P185	ST48P190	ST48P195	ST48P200	ST48P205	ST48P210	ST54P210	ST54P215	ST54P220	ST54P225	ST54P230	ST54P235
Maximum Power (Pmax / W)	145	150	155	185	190	195	200	205	210	210	215	220	225	230	235
Power Tolerance	± 3%														
Maximum Power Voltage (Vm / V)	17.7	17.9	18.2	23.8	24.3	24.4	24.6	24.8	25.0	27.1	27.3	27.4	27.7	27.8	28.0
Maximum Power Current (Im / A)	8.19	8.38	8.52	7.78	7.82	8.00	8.14	8.30	8.42	7.76	7.89	8.06	8.13	8.30	8.42
Open Circuit Voltage (Voc / V)	21.8	21.9	22.1	29.5	29.6	29.7	29.8	29.9	30.2	33.0	33.2	33.4	33.6	33.7	33.9
Short Circuit Current (Isc / A)	8.83	8.94	9.10	8.39	8.47	8.57	8.73	8.75	8.90	8.43	8.51	8.61	8.68	8.72	8.90
Module Efficiency (%)	14.62	15.13	15.63	14.16	14.54	14.92	15.30	15.69	16.07	14.33	14.67	15.02	15.36	15.70	16.04

Module Type	ST60P235	ST60P240	ST60P245	ST60P250	ST60P255	ST72P280	ST72P285	ST72P290	ST72P295	ST72P300	ST72P305	ST72P310	ST72P315
Maximum Power (Pmax / W)	235	240	245	250	255	280	285	290	295	300	305	310	315
Power Tolerance	± 3%												
Maximum Power Voltage (Vm / V)	30.1	30.2	30.3	30.5	30.8	36.2	36.5	36.6	36.7	36.8	37.0	37.2	37.5
Maximum Power Current (Im / A)	7.81	7.95	8.09	8.22	8.30	7.76	7.82	7.95	8.06	8.17	8.25	8.36	8.42
Open Circuit Voltage (Voc / V)	36.5	36.9	37.1	37.3	37.4	44.3	44.4	44.6	44.7	44.8	45.1	45.2	45.3
Short Circuit Current (Isc / A)	8.43	8.51	8.61	8.68	8.78	8.43	8.47	8.57	8.61	8.68	8.72	8.84	8.90
Module Efficiency (%)	14.47	14.78	15.09	15.40	15.71	14.50	14.76	15.02	15.28	15.54	15.80	16.06	16.32